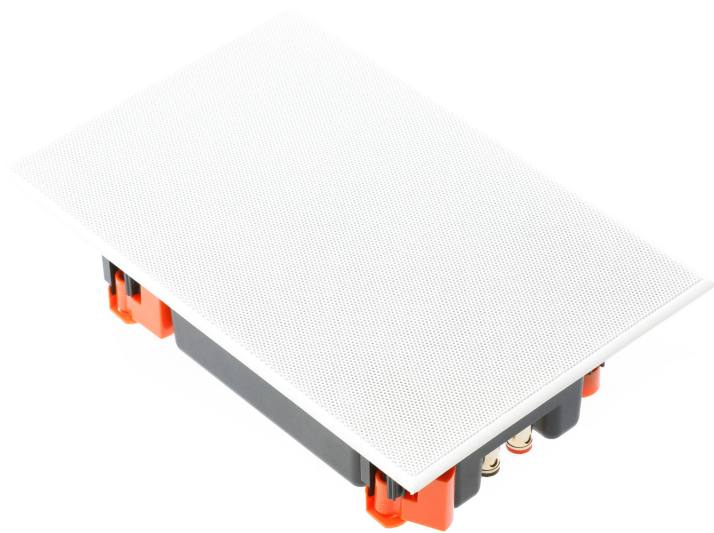


# WATERFALL AUDIO

SOUND DESIGNERS

MADE IN FRANCE



USER'S MANUAL  
HURRICANE  
IN WALL CLASSIC

## INFORMATIONS & OPERATING INSTRUCTIONS

---

Thank you for choosing Waterfall Audio speakers. Our deliberate choice for aesthetics and performance constantly guides us towards cutting-edge technologies and design combined with major innovations. The Hurricane in-wall is designed to work in perfect symbiosis with all Waterfall Audio loudspeakers, and is strongly recommended for use with a Waterfall Audio subwoofer.

**MUST BE CONSULTED BEFORE USE.**

**TO BE KEPT AND PASSED ON IN THE EVENT OF RESALE.**

**WARNING :** BEFORE ANY DRILLING OPERATION, ALWAYS MAKE SURE TO CONSULT THE PLANS OF THE ROOM. TO ENSURE THAT THERE IS NO PIPE, ELECTRICAL CONDUIT OR ANY SPECIFIC INSTALLATION BEHIND THE WALL.

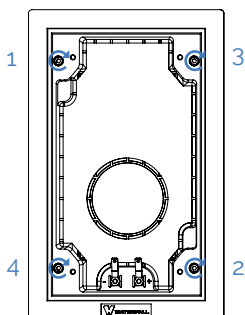
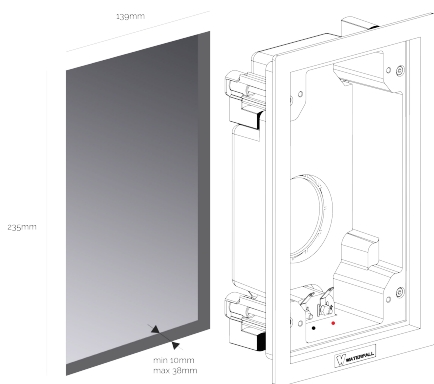
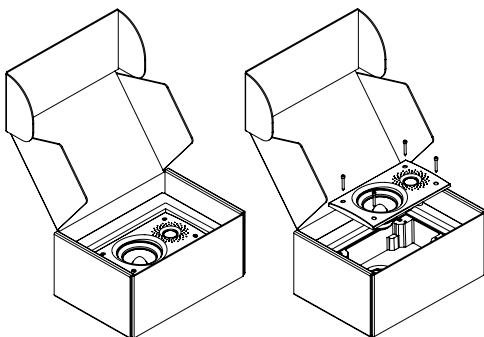
### WARRANTY

---

Waterfall speakers have a 5 years warranty (parts & service) except amplifiers. Waterfall amplifiers have a 2 years warranty (parts & service). Check more on [www.waterfallaudio.com](http://www.waterfallaudio.com) (warranty section).

**THIS DOCUMENT MUST BE PROVIDED IN THE EVENT OF RESALE**

## UNPACKING AND INSTALLATION



### STEP 1

Open and remove the upper protective wedges then remove the 4 screws holding the front panel. Separate the front from the back box.

### STEP 2

Cut out the partition using the template provided. Be sure to check its horizontality before starting cutting using a level.

Before any drilling operation, always make sure to consult the plans of the room to ensure that there are no pipes, electrical conduits or any specific installations behind the wall.

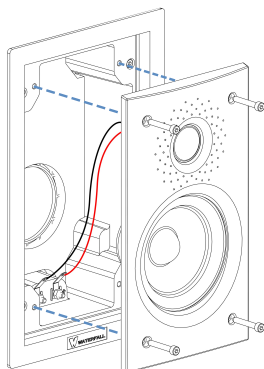
**Before installing the back box in the wall, connect the speaker cable. Check the + and - polarities.**

Once the back box is in the wall, screw the 4 latches for permanent fixing.

Caution: cross screwing recommended (see diagram).

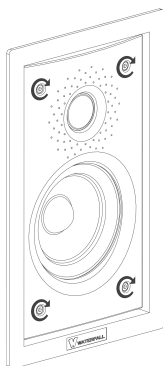
## INSTALLATION

---



### STEP 3

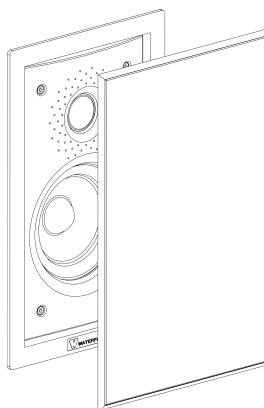
Connect the cables from the front to the terminals of the back box (respect the + and - polarities) then place the front panel in the back box (be careful not to pinch the cables).



### STEP 4

Gradually tighten the 4 screws to permanently attach the front to the back box.

Caution: cross screwing recommended (see diagram).



### STEP 5

Install the protective cover (magnetic fixing)

## CONNECTION TO YOUR AMPLIFIER

---

Connect directly Hurricane in-wall to the speaker sockets of your amplifier or audio video processor. Make sure that the + and - polarity are correct. **Never connect two speakers in parallel (or in series) on the same channel. Never connect your speakers to the mains.**



The "Waterfall Audio" cable is made from very high quality deoxygenated copper that is particularly well suited to your speakers. It is available from your dealer.

## ACOUSTIC SET UP AND CONFIGURATION

---

### SET UP OF YOUR AUDIO VIDEO PROCESSOR :

- Configure all speakers in "small" mode
- Choose 120Hz as the crossover frequency.
- Adjust levels and distances

In the case of "auto set up" configurations with microphones, check the consistency of the settings afterwards.

### SET UP OF YOUR WATERFALL AUDIO SUBWOOFER :

- Switch "24-12-LFE" to the LFE position (note: on LFE the FREQ button is inactive, the crossover frequency is generated by the processor).
- Adjust the volume ("LEVEL") as required.
- PHASE: depending on the processor's bass management settings and certain distance parameters, phase inversion (180°) may be necessary.

A good phase connection will give a dense, homogenous sound reproduction. A poor phase match is characterised by a lack of energy in the lower midrange and an overly present high midrange.

## WATERFALL AUDIO

ZA les praderies - 83 570 Carcès - France  
[waterfallaudio.com](http://waterfallaudio.com)

Made in France, 5 years warranty on speakers, 2 years warranty on amplifiers (parts& service).  
We operate a policy of continuous improvement and reserve the right to amend designs and specifications without prior notice.



All drivers and amplifiers are developed and manufactured by ATOHM (France).